

# MONTHLY MEMBERSHIP PROGRESS REPORT

District 11 A2

Results as of: 6/30/2020

GMT:

LOCATION MICHIGAN

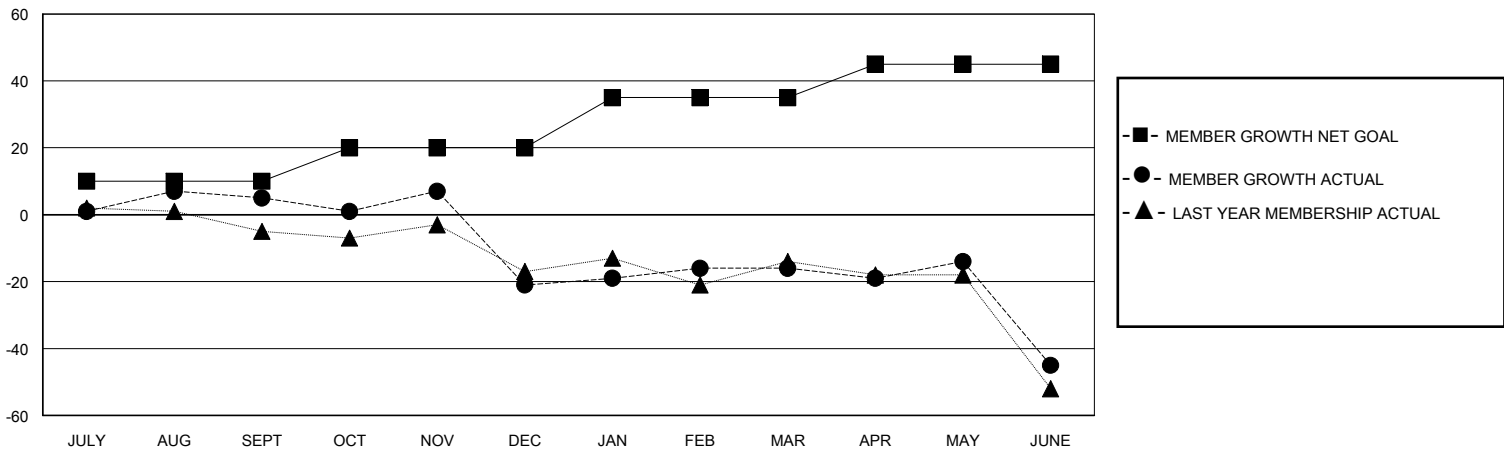
GMT CA

Clubs				Members			
RESULTS FOR 2019-2020				RESULTS FOR 2019-2020			
QUARTER	NEW CLUB GOAL	NEW CLUBS	DROPPED CLUBS	QUARTER	MEMBER GROWTH NET GOAL	MEMBER GROWTH ACTUAL	DROPPED MEMBERS ACTUAL (including transfers)
JULY/AUG/SEPT	0	0	0	JULY/AUG/SEPT	10	33	20
OCT/NOV/DEC	1	0	2	OCT/NOV/DEC	10	29	53
JAN/FEB/MAR	0	0	0	JAN/FEB/MAR	15	23	16
APR/MAY/JUNE	0	0	1	APR/MAY/JUNE	10	7	36

GOALS AND ACTUAL NEW CLUBS CUMULATIVE



GOALS AND ACTUAL MEMBERS CUMULATIVE



DROPPED CLUBS: 3	24 CLUBS OF 41 ADDED 1 OR MORE NEW MEMBERS	<b>GENDER DISTRIBUTION</b> MALE 914 (70.25%) FEMALE 387 (29.75%)
<b>DROPPED MEMBERS</b> DECEASED 26 CLUB CANCELLED 24 OTHER 75 TOTAL 125	<a href="#">CLICK HERE FOR CUMULATIVE MEMBERSHIP DATA</a>	TOTAL FAMILY UNIT MEMBERS 216 FAMILY MEMBERS PAYING HALF DUES 111